



# SAFETY ALERT

LV Cable strike

Issued: 19/10/2018

| Number: 10-18

## What happened?

A Pole Inspector commenced excavating around the base of a network pole with a wooden handled shovel. He exercised caution during the excavation, due to the visual indicator(s) of a low voltage (LV) underground to overhead (UGOH) electrical service and a telecommunication service on the pole (Fig. 3).

Whilst excavating around the opposite side of the pole with the intention of digging towards the location of the identified services, there was an arc from inadvertent contact with a direct buried LV electrical service line. No injuries occurred.

The LV electrical service was direct buried at a shallow depth of 150mm from ground level, and wrapped around the base of the pole for the purpose of a road crossing.

On investigation, it was identified that the service line was defective, and failed to meet the installation standards (SIR NSW).

## What has been done?

- The Pole Inspector immediately ceased works, implemented an exclusion zone and notified the Operations Manager to report the event.
- An Incident Response crew was dispatched to the worksite and arrived within the hour to further investigate and restore supply to the residents.
- An incident investigation has commenced.

## What you need to do

- Be aware of the potential to encounter UGOH installations that do not meet the Service Installation Rules, or asset owner installation standards.
- Undertake a visual inspection of the worksite, to identify existing UGOH installations on the pole. Identify the most appropriate methods for excavation.
- Ensure all tools used to excavate and penetrate ground are non-conductive and suitable for the task.
- Once a service is positively identified, ensure a clearance is maintained to prevent inadvertent contact.
- Document the controls within the daily pre-start risk assessment (WHRA) and ensure all persons on the worksite are familiar with the controls.

## Who you should contact

For details of the incident:

Grant Gillard, Lead Investigator / Auditor on 9853 5171

Peter Cvetanovski, UGL Consultant on 0466 867 583

## Procedures, WPIs or SWMS to adhere to

SWM 1.010 - Overhead and Ground Line Inspection and Audit

GSY 1066 - Worksite Hazard and Risk Assessment



Fig. 1 – Direct buried LV cable damage (at 150mm depth)



Fig. 2 – Damage to wooden handled shovel

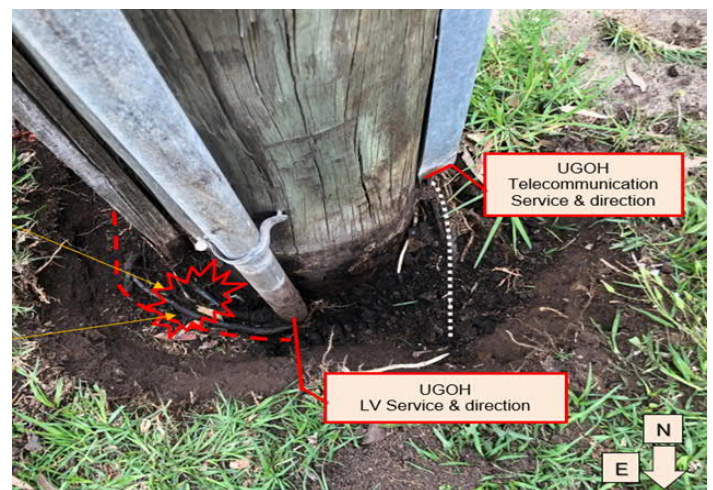


Fig. 3 – Pole inspected

UNCONTROLLED COPY IF PRINTED – refer to the Safety intranet page

Owner: Grant Gillard, Lead Investigator / Auditor on 9853 5171

Approver: Jadranka Landeka, Acting Manager HSE Assurance & Improvements

Expiry Date: 12 months from date of issue